

July 2014 Agro-met Report

As the tropical waves begin to traverse the region from off the African coast, rainfall amounts are beginning to increase and also saw the formation of Tropical depression number 2. July rainfall which was 92.9mm, has almost doubled that of last years but is however, only 67.76% of the Long Term Average (LTA) (1986-2014) of 137.1mm.

Tropical waves on the 10th- 11th, 18th-19th and 25th brought rainfall amounts of 15.4mm, 17.0mm and 16.7mm respectively. There were ten (10) other days with rainfall greater than 1.0mm, five (5) days with rainfall between 0.1mm and 1.0mm and thirteen (13) days with none or insignificant amounts. *See fig.1*

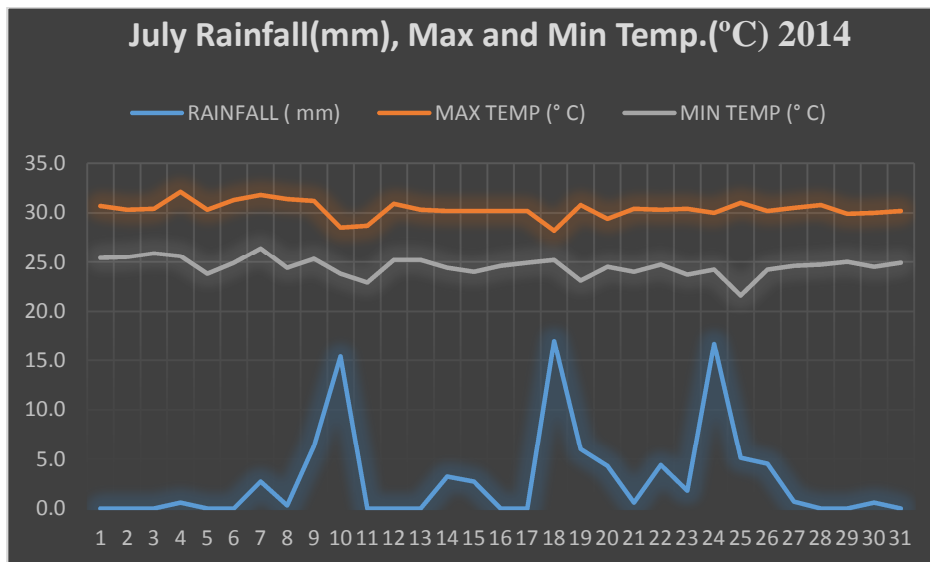


Fig.1

Graph for July 2014 showing rainfall (mm), Max and Min temperatures (°C)

Although rainfall for the first quarter of 2014 was 84.82% more than 2013 and 46% more than the LTA (1986 – 2014), rainfall up to July was 15.6% less than 2013's 423.8mm and 24.36% less than the LTA of 472.9mm. *See fig 2 below.*

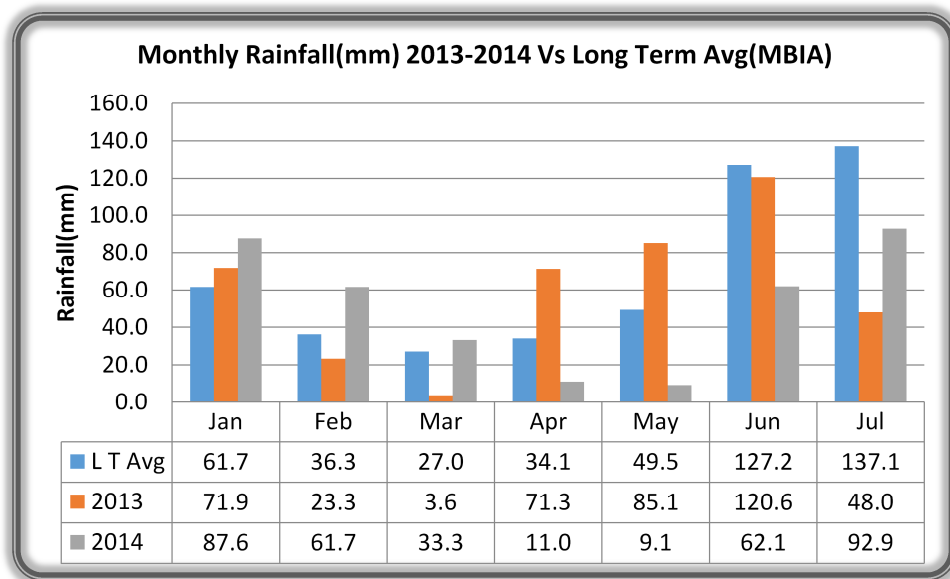


Fig.2

Fig.2 showing a comparison in rainfall up to July between 2013, 2014 and the LTA.

Mean daily temperatures for July was lower than that of last years by an average of 0.2°C reaching a mean of 27.5°C, while the mean maximum and minimum temperatures were 30.3°C and 24.6°C respectively. The highest maximum temperature though was 32.1°C and occurred on the 4th while the lowest minimum was 21.6°C and occurred on the 25th of the month as shown in *Fig.1* above.

The Bermuda Azores High peaked early during the month reaching a high of 1035mb on the 2nd and measured 1028mb and over for more than half the month. Steep pressure gradients generated moderate to strong winds causing Marine advisories to be issued on the 9th, 10th, 18th, 19th and 20th. A gust of 58knots in showers was recorded on the 25th. Small craft operators and sea bathers were cautioned.

The start of the rains saw Farmers having some very good production in mangoes, eggplants, lettuce, water melon and especially tomatoes.

Prepared by: Wayne Springle